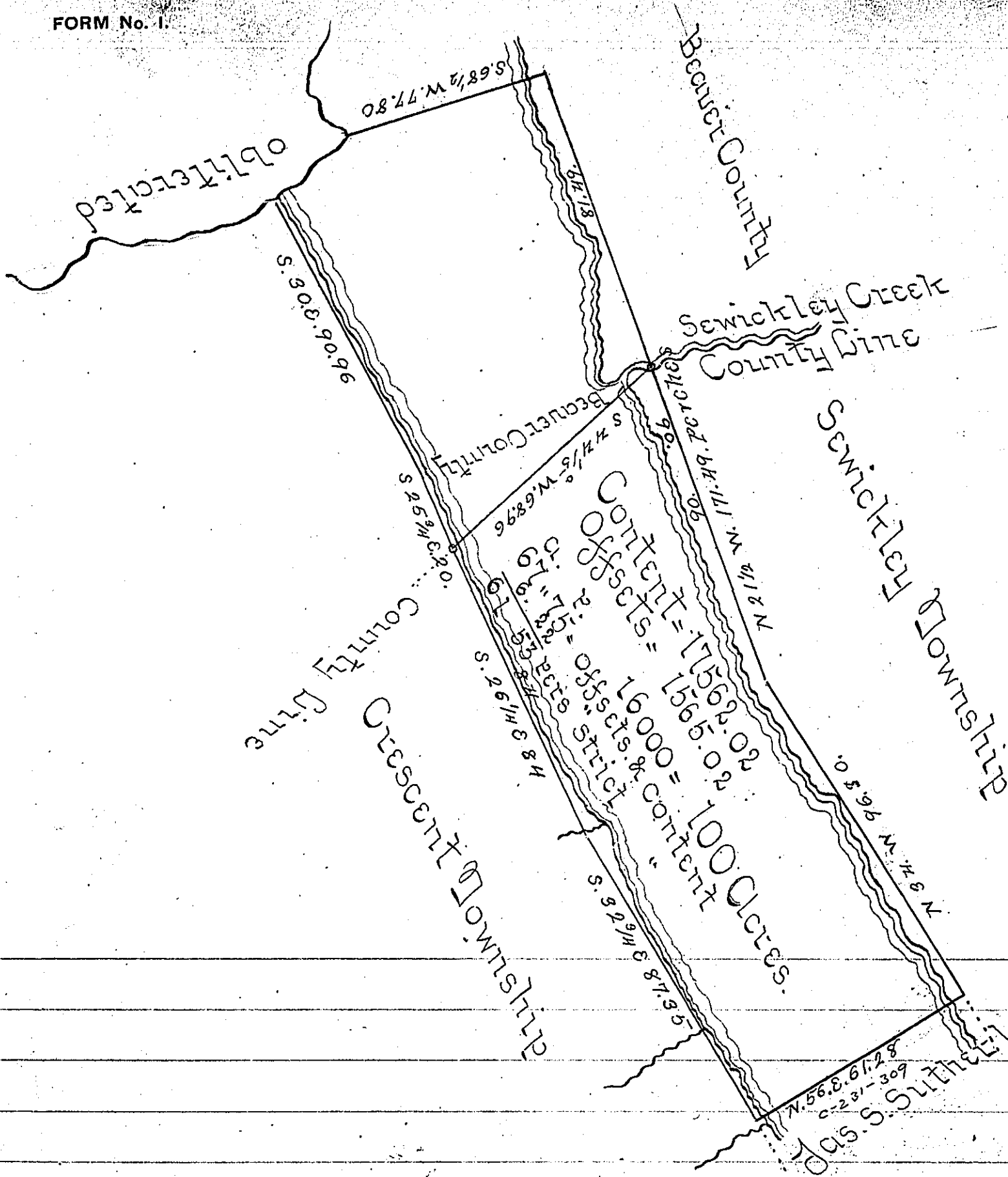


1455-551

5-56
= Part.



Draught of a survey made of the bed of the Ohio River between Sewickley and Crescent Townships in Allegheny County, Pennsylvania: adjoining the Beaver County line containing sixty one acres and fifty three perches, strict measure. Executed (obl) of the 27th Feb^y 1864 upon a Warrant dated the 19th day of January 1864 in the name of Joseph Abel

James P. Barr Esq Surveyor } E. H. Hastings C.S.
General Harrisburg Penn^a }

IN TESTIMONY that the above is a copy of the original remaining on file in the Department of Internal Affairs of Pennsylvania, made conformably to an Act of Assembly approved the 16th day of February, 1833, I have hereunto set my Hand and caused the Seal of said Department to be affixed at Harrisburg, this sixth day of October 1903.

Loose P. Pearson
Secretary of Internal Affairs.